

Mounting adapter for
LED surface light
MA/LEDF 600-0

200037350-00



Product description

Mounting adapter LED surface area light to hold terminal blocks when an LEDF 600-... is mounted in housing BGA 611-..., BG/KSF 611-..., BG/SR 611-... or in the info sign housing of a KSF 61x.

Specifications

Dimensions (mm) W x H x D: 56 x 56 x 5.5

Article information

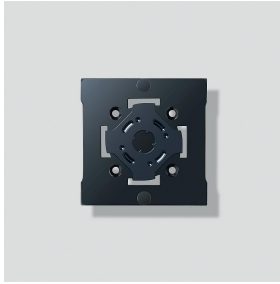
Article designation	Article description	Colour/Material	KGSAP article no.
MA/LEDF 600-0	Mounting adapter for LED surface light	Black	D 200037350-00

Mounting adapter for
LED surface light
MA/LEDF 600-0

200037350

Page 2





Mounting adapter for
LED surface light
MA/LEDF 600-0

200037350

Page 3

Vario 611 Mounting instructions

Product information

1,1 MB

[Download](#)

Declaration of Conformity

140 kB

[Download](#)

Additional information

109 kB

[Download](#)