

Pass-through letterbox
for mounting in
masonry
BKV 611-4/3-0 W

200034135-00

Product description

Pass-through letterbox according to DIN EN 13724 modular system, for masonry walls (dry masonry), made of hot-dip galvanized sheet steel, 0.8 mm, in inclined 45° model, extendable from 290 - 440 mm, can be combined horizontally and vertically.

Rear removal door, opening downwards, with cylinder lock, nameplate and inspection window. With connecting screws.

Specifications

Nameplate size (mm) W x H:	70 x 21
Dimensions (mm) W x H x D:	400 x 300 x 290-440

Article information

Article designation	Article description	Colour	KG	KGSAP article no.
BKV 611-4/3-0 W	Pass-through letterbox for mounting in masonry	White	B	200034135-00

Accessories

Article designation	Article description	Colour	KG	SAP article no.
Vario 611 W	Touch-up applicator	White	0	210007116-00

Spare parts

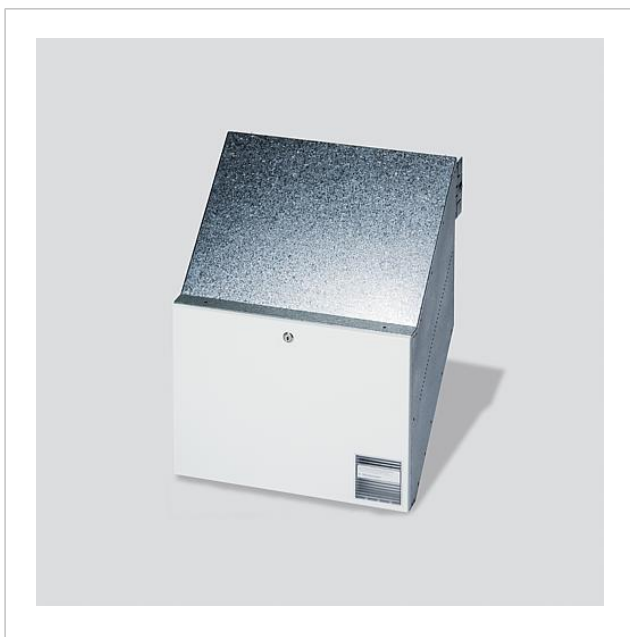
Article designation	Article description	Colour	KG	SAP article no.
BKV 611-...	Viewing window for removal door	Clear glass	E	200019641-00
BKV/RGA/RGF 611-...	Spare lock	Others	E	200029520-00



Pass-through letterbox
for mounting in
masonry
BKV 611-4/3-0 W

200034135

Page 2





Pass-through letterbox
for mounting in
masonry
BKV 611-4/3-0 W

200034135

Page 3

BKV 611-3/... and BKV 611-4/... Siedle-Vario Pass-through letter box for mounting in masonry	Product information	818 kB	Download
	Declaration of Conformity	140 kB	Download
	Additional information	420 kB	Download